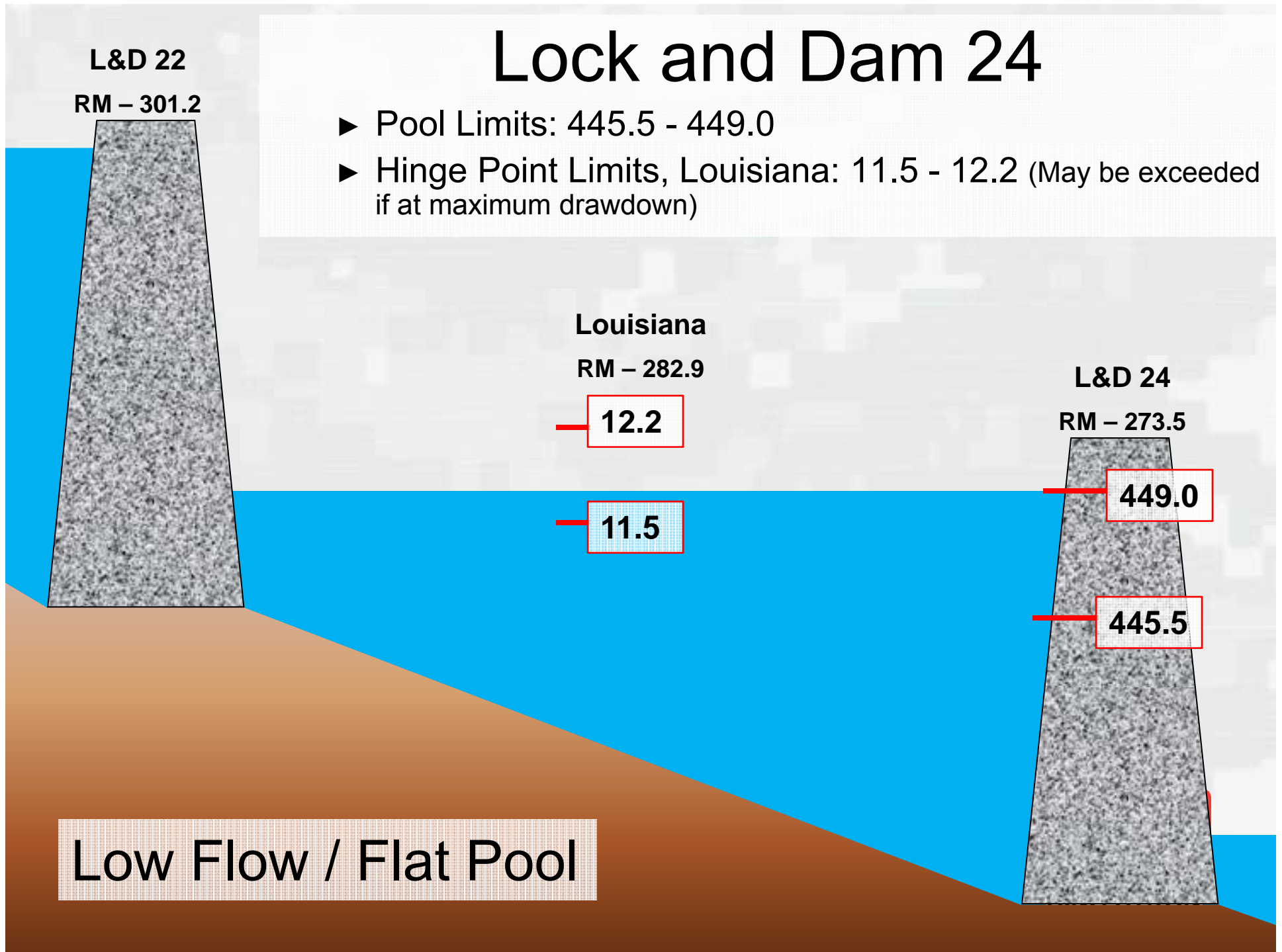


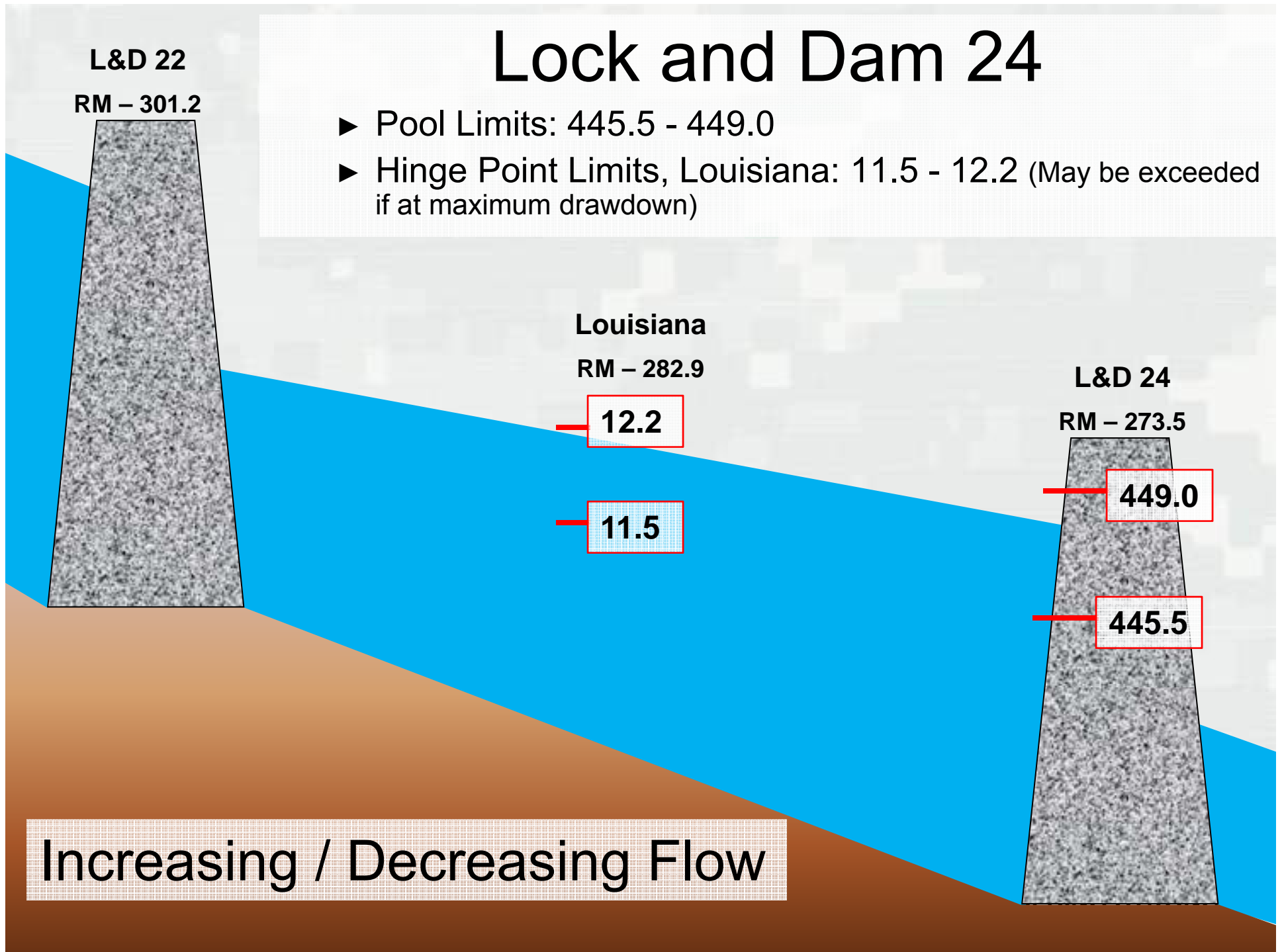
Lock and Dam 24

- ▶ Pool Limits: 445.5 - 449.0
- ▶ Hinge Point Limits, Louisiana: 11.5 - 12.2 (May be exceeded if at maximum drawdown)



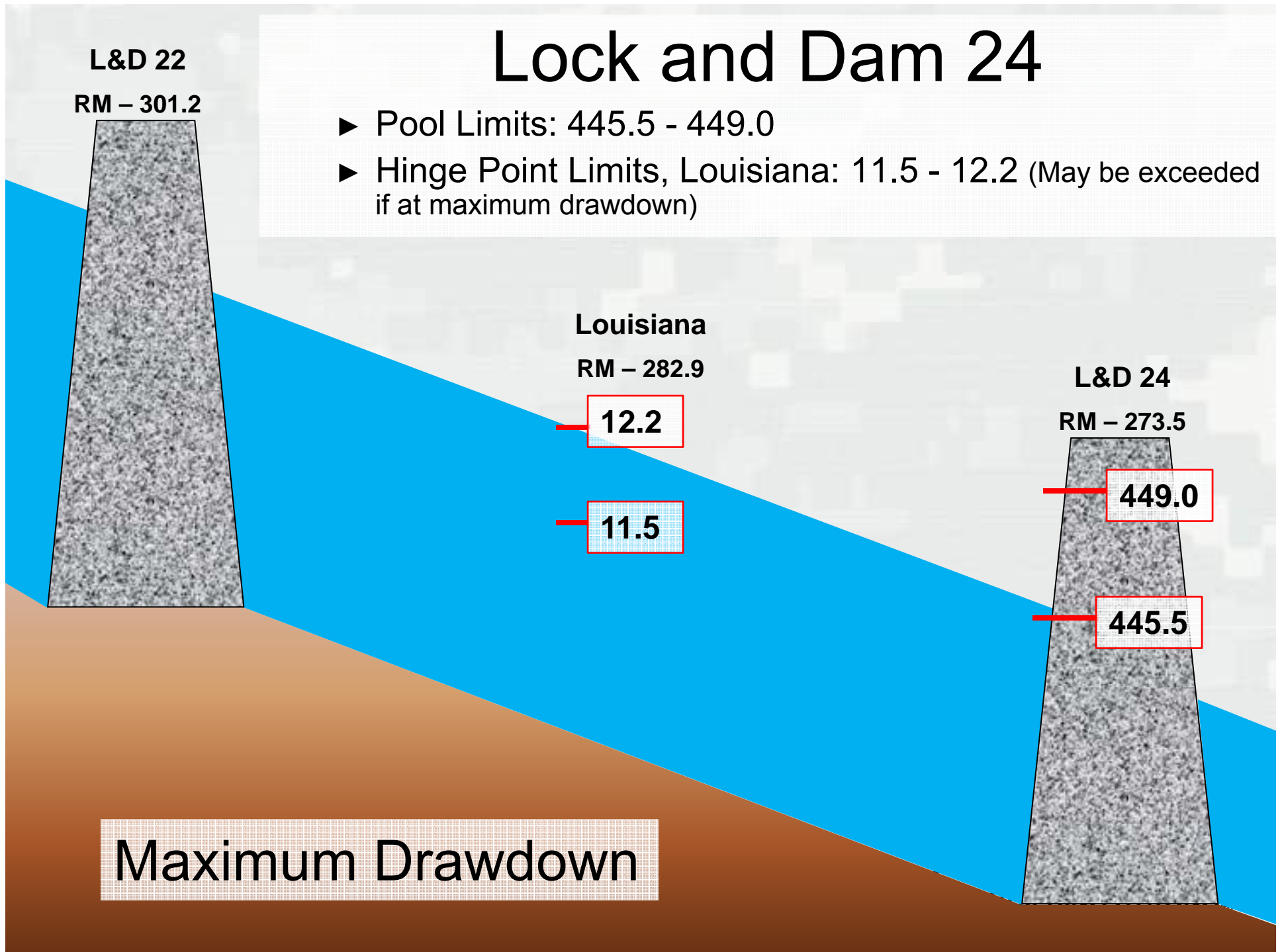
Lock and Dam 24

- ▶ Pool Limits: 445.5 - 449.0
- ▶ Hinge Point Limits, Louisiana: 11.5 - 12.2 (May be exceeded if at maximum drawdown)



Lock and Dam 24

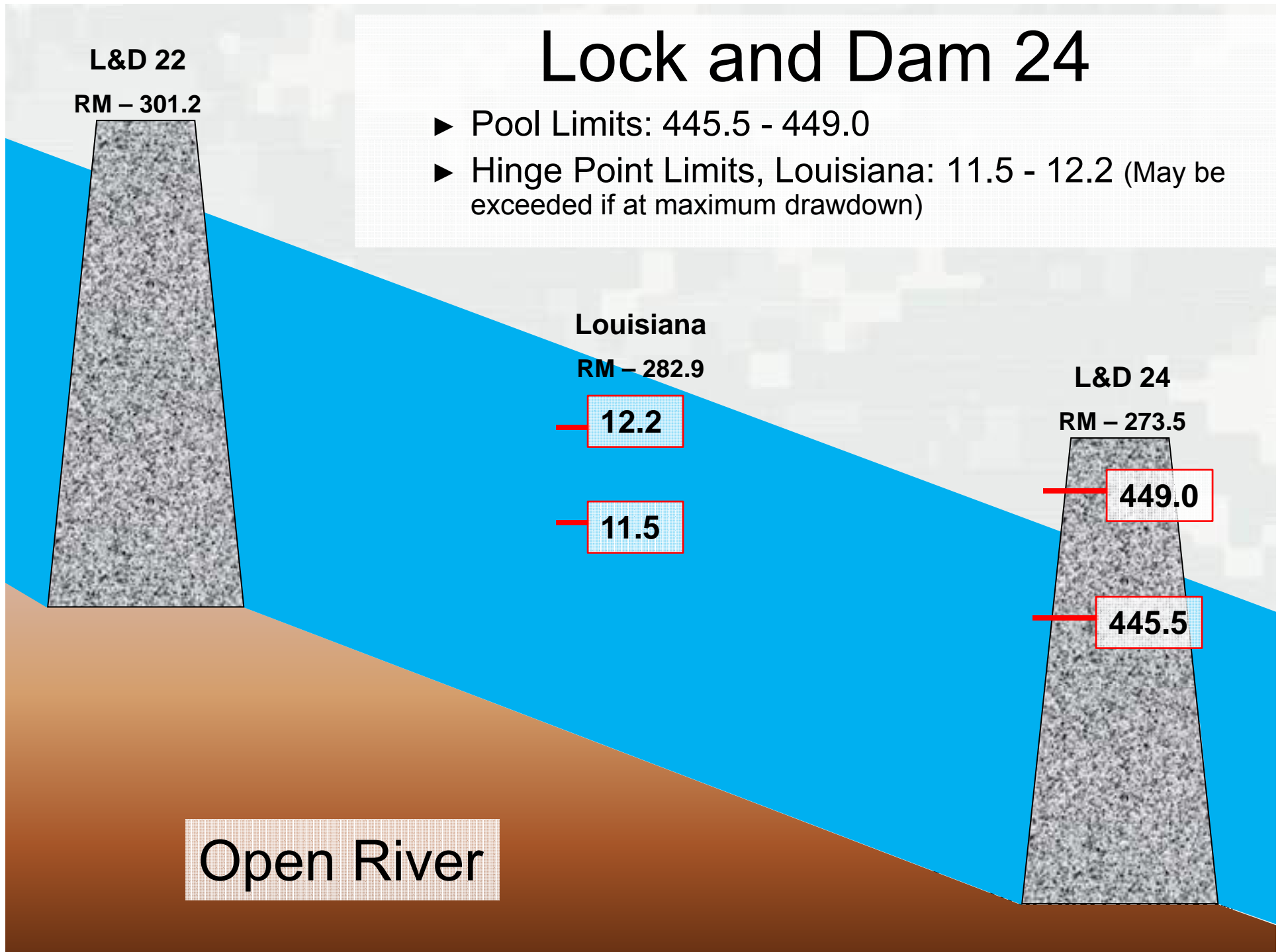
- ▶ Pool Limits: 445.5 - 449.0
- ▶ Hinge Point Limits, Louisiana: 11.5 - 12.2 (May be exceeded if at maximum drawdown)



Maximum Drawdown

Lock and Dam 24

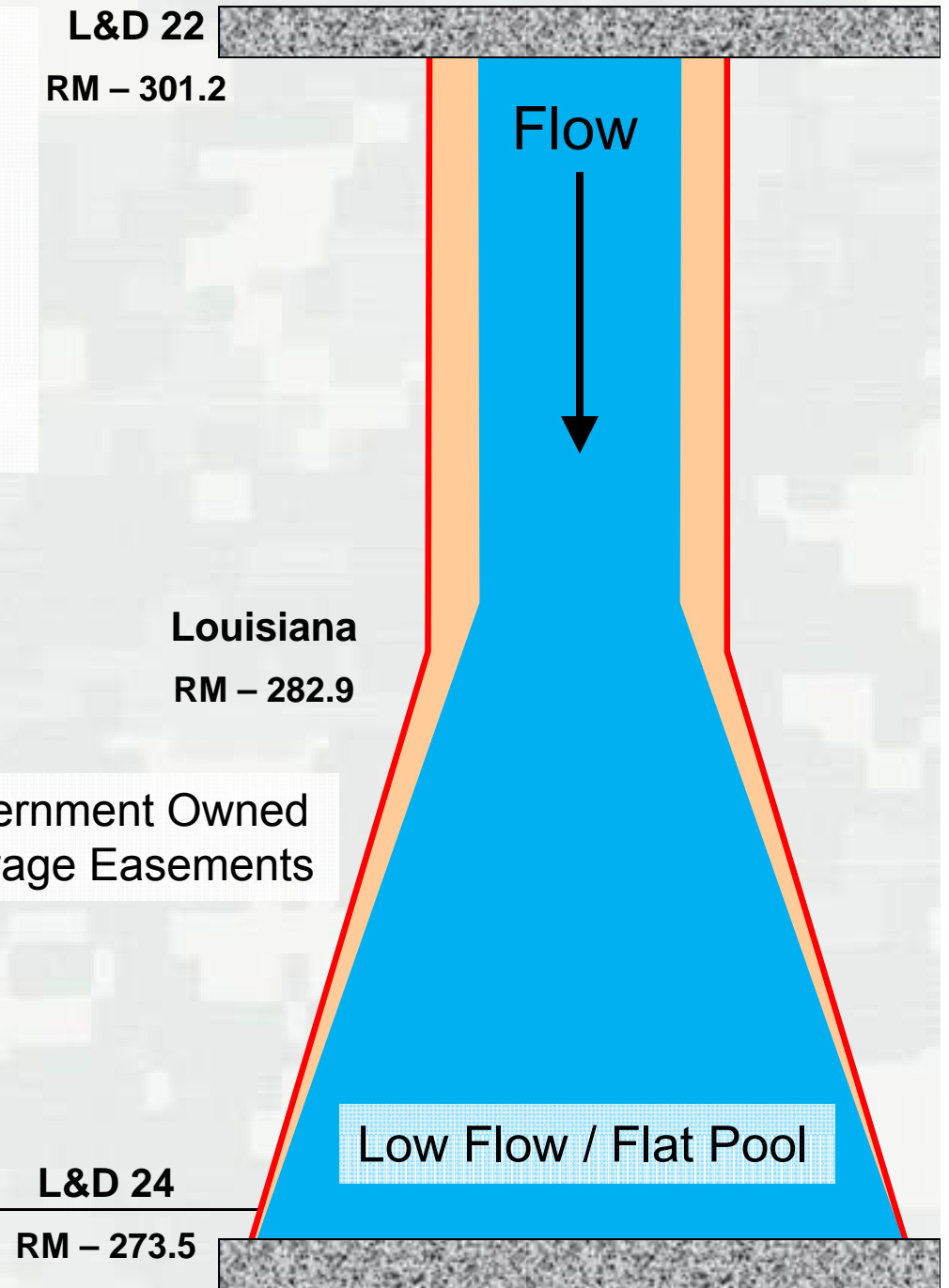
- ▶ Pool Limits: 445.5 - 449.0
- ▶ Hinge Point Limits, Louisiana: 11.5 - 12.2 (May be exceeded if at maximum drawdown)



Lock and Dam 24


- ▶ Pool Limits: 445.5 - 449.0
- ▶ Hinge Point Limits, Louisiana: 11.5 - 12.2 (May be exceeded if at maximum drawdown)

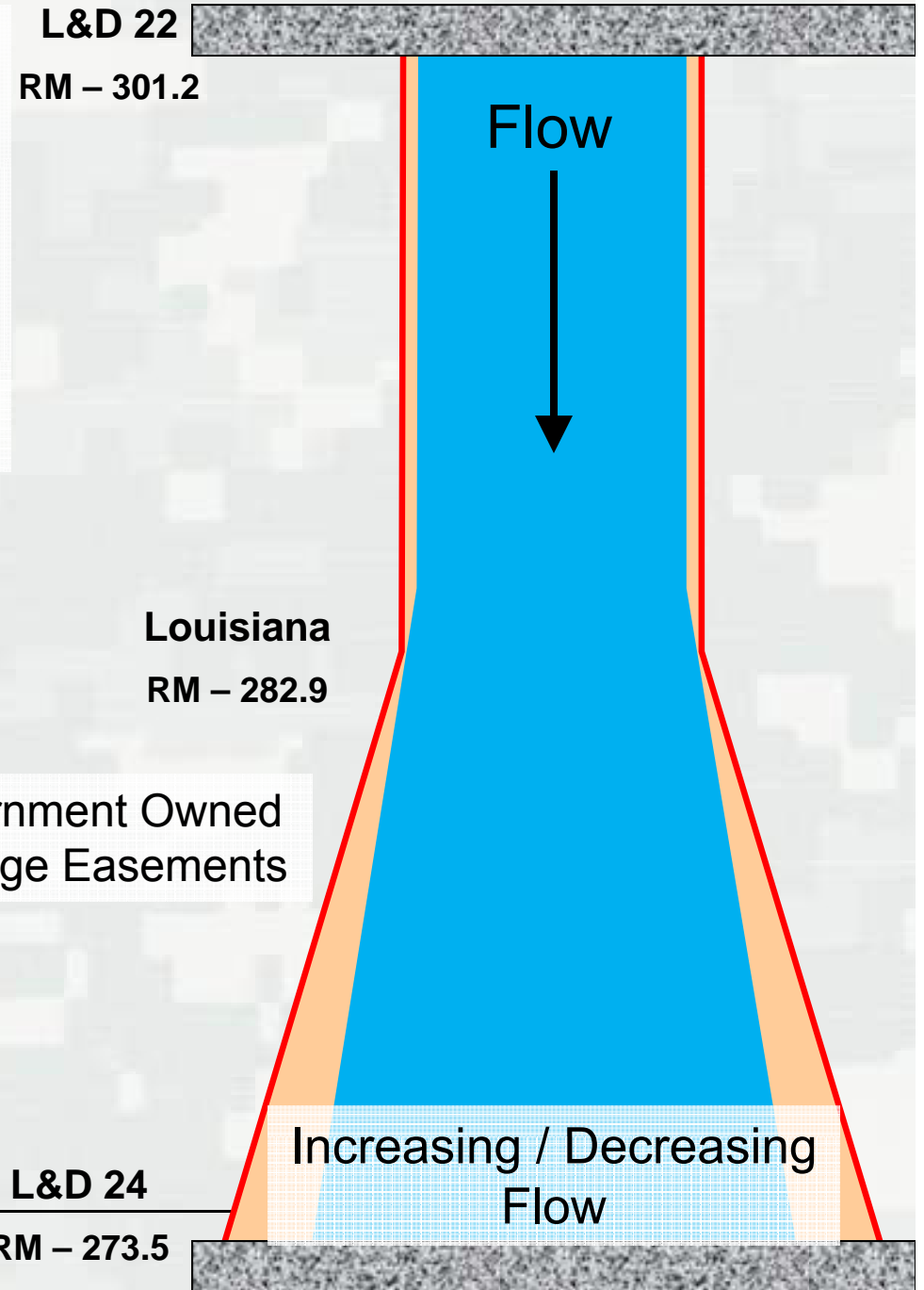
 Government Owned Flowage Easements



Lock and Dam 24

- ▶ Pool Limits: 445.5 - 449.0
- ▶ Hinge Point Limits, Louisiana: 11.5 - 12.2 (May be exceeded if at maximum drawdown)

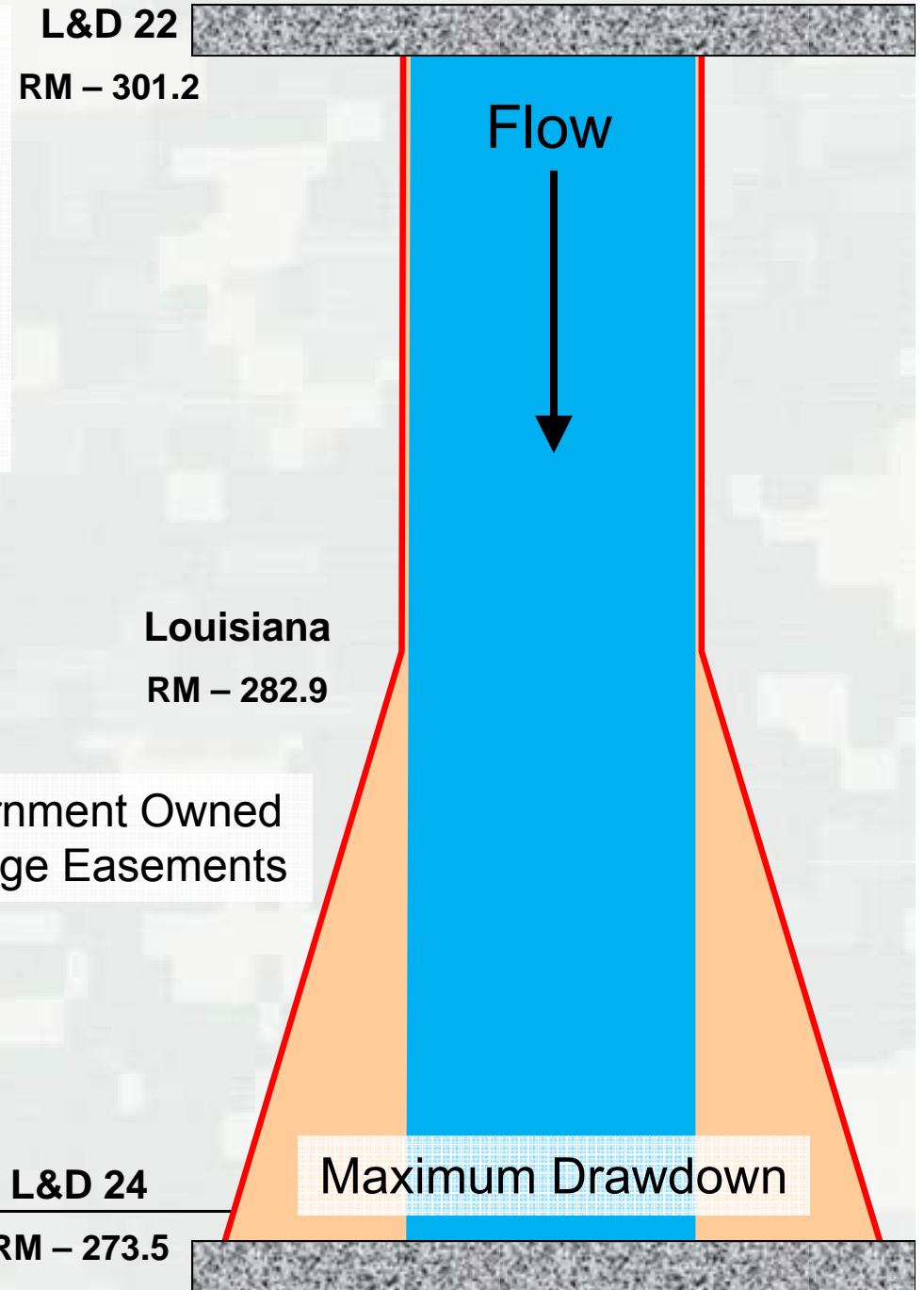
 Government Owned Flowage Easements



Lock and Dam 24


- ▶ Pool Limits: 445.5 - 449.0
- ▶ Hinge Point Limits, Louisiana: 11.5 - 12.2 (May be exceeded if at maximum drawdown)

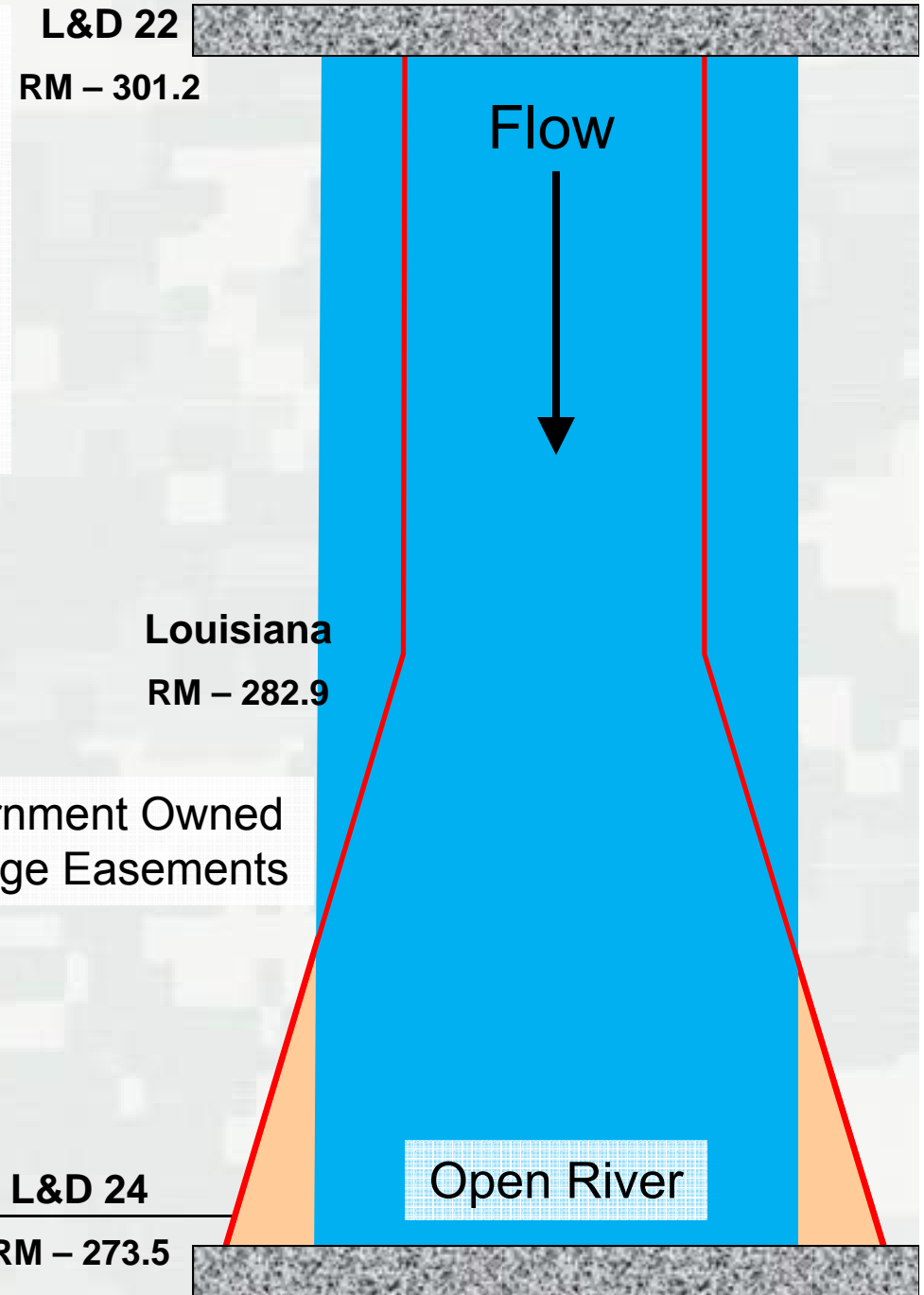
 Government Owned Flowage Easements



Lock and Dam 24

- ▶ Pool Limits: 445.5 - 449.0
- ▶ Hinge Point Limits, Louisiana: 11.5 - 12.2 (May be exceeded if at maximum drawdown)

 Government Owned Flowage Easements



Hinge Point Operation

- Lock and Dam 24
 - ▶ Pool Limits: 445.5 - 449.0
 - ▶ Hinge Point Limits, Louisiana: 11.5 - 12.2 (May be exceeded if at maximum drawdown)
- Lock and Dam 25
 - ▶ Pool Limits: 429.7 - 434.0
 - ▶ Hinge Point Limits, Mosier Landing: 434.0 - 437.0 (May be exceeded if at maximum drawdown)
- Melvin Price Locks and Dam
 - ▶ Pool Limits: 412.5 - 419.0 Alton Lower Limit: 414.0
 - ▶ Hinge Point Limits, Grafton: 14.2 - 16.2 (May be exceeded if at maximum drawdown, or Alton at 414.0)
- Kaskaskia Lock and Dam
 - ▶ Pool Limits: 363.0 - 368.8
 - ▶ Hinge Point, Red Bud: 368.0 - 370.0

