

Appendix A

Stone Bed Protection Gradations

Main Dam Original Gradation

Percent Finer by Weight	Stone Weight
(%)	(lb.)
100	400
50 - 100	160
15 - 50	80
0 - 15	30

Graded Stone B (Between Main and Aux Lock) Original Gradation

Percent Finer by Weight	Stone Weight
(%)	(lb.)
100	1,200
72 - 100	750
40 - 65	200
20 - 38	50
22-May	10
0 - 15	1
0 - 5	< 1

First Repair

Percent Finer by Weight	Stone Weight
(%)	(lb.)
100	5,000
70 - 100	2,500
40 - 65	500
20 - 45	100
0 - 15	5
0 - 5	1

Second Repair

Percent Finer by Weight	Stone Weight
(%)	(lb.)
100	5,000
50 - 100	2,100
15 - 50	1,000
0 - 15	300

Appendix B Mel Price Lock & Dam Upstream Hydrographic Surveys

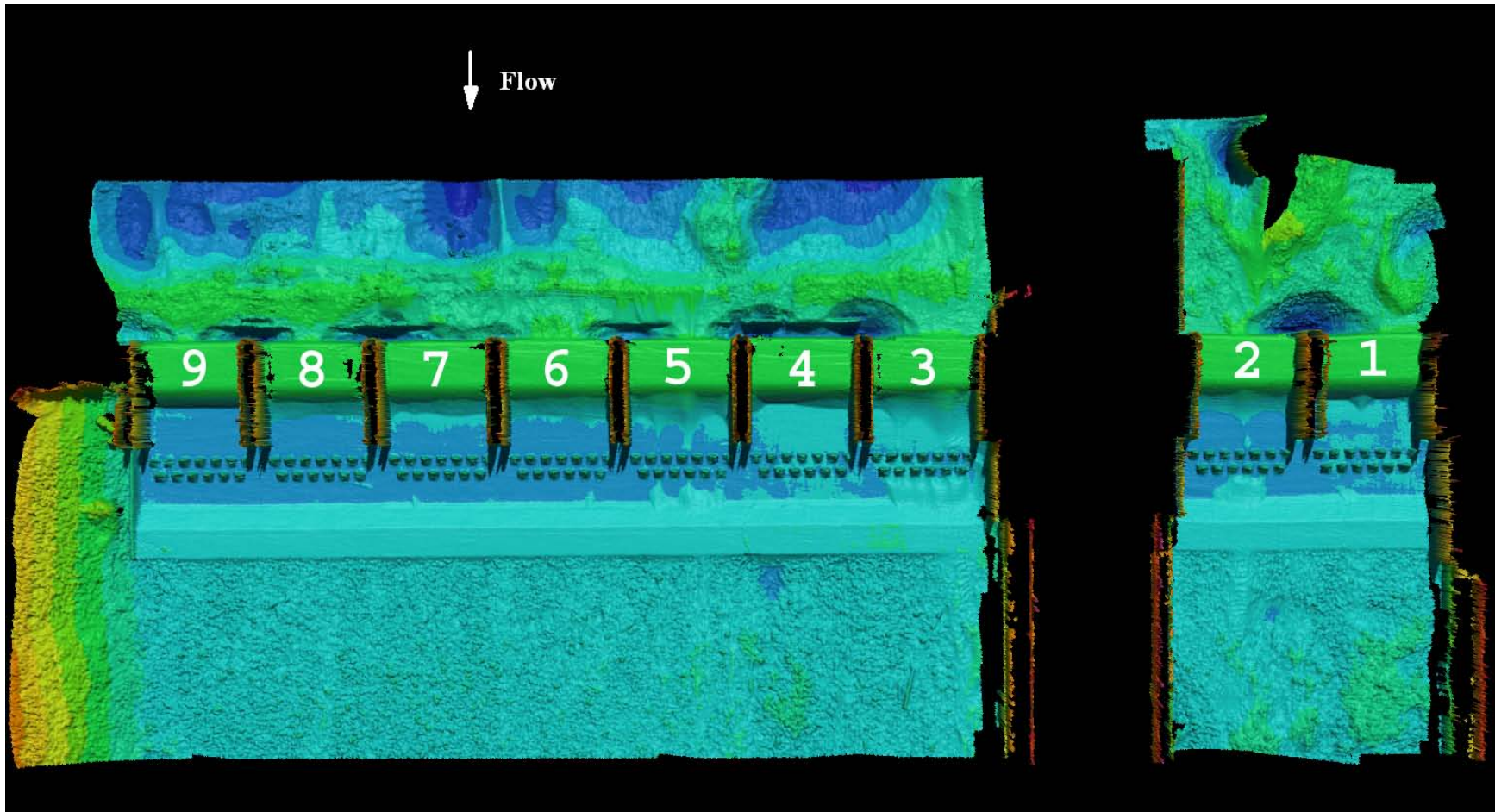
Flow direction and gate numbering consistent for all surveys; scale not consistent

Survey Color Ramp (consistent for all surveys, elevation in ft. above MSL)

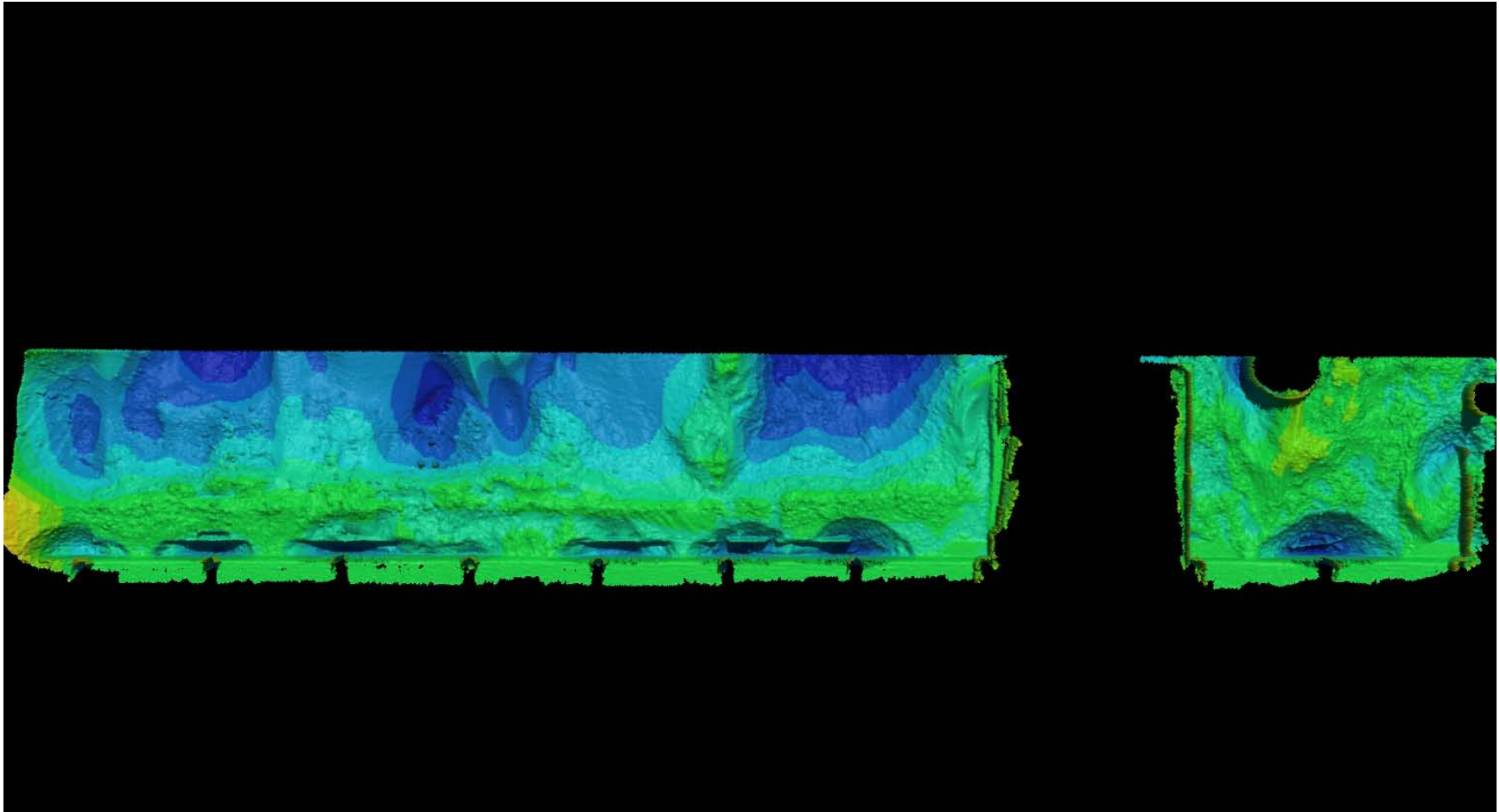
Start Range	End Range	Start Color	End Color
<335.00	335.00		
335.00	340.00		
340.00	345.00		
345.00	350.00		
350.00	355.00		
355.00	360.00		
360.00	365.00		
365.00	370.00		
370.00	375.00		
375.00	380.00		
380.00	385.00		
385.00	390.00		
390.00	395.00		
395.00	400.00		
400.00	405.00		
405.00	410.00		
410.00	415.00		
415.00	>415.00		

April 2007 Survey

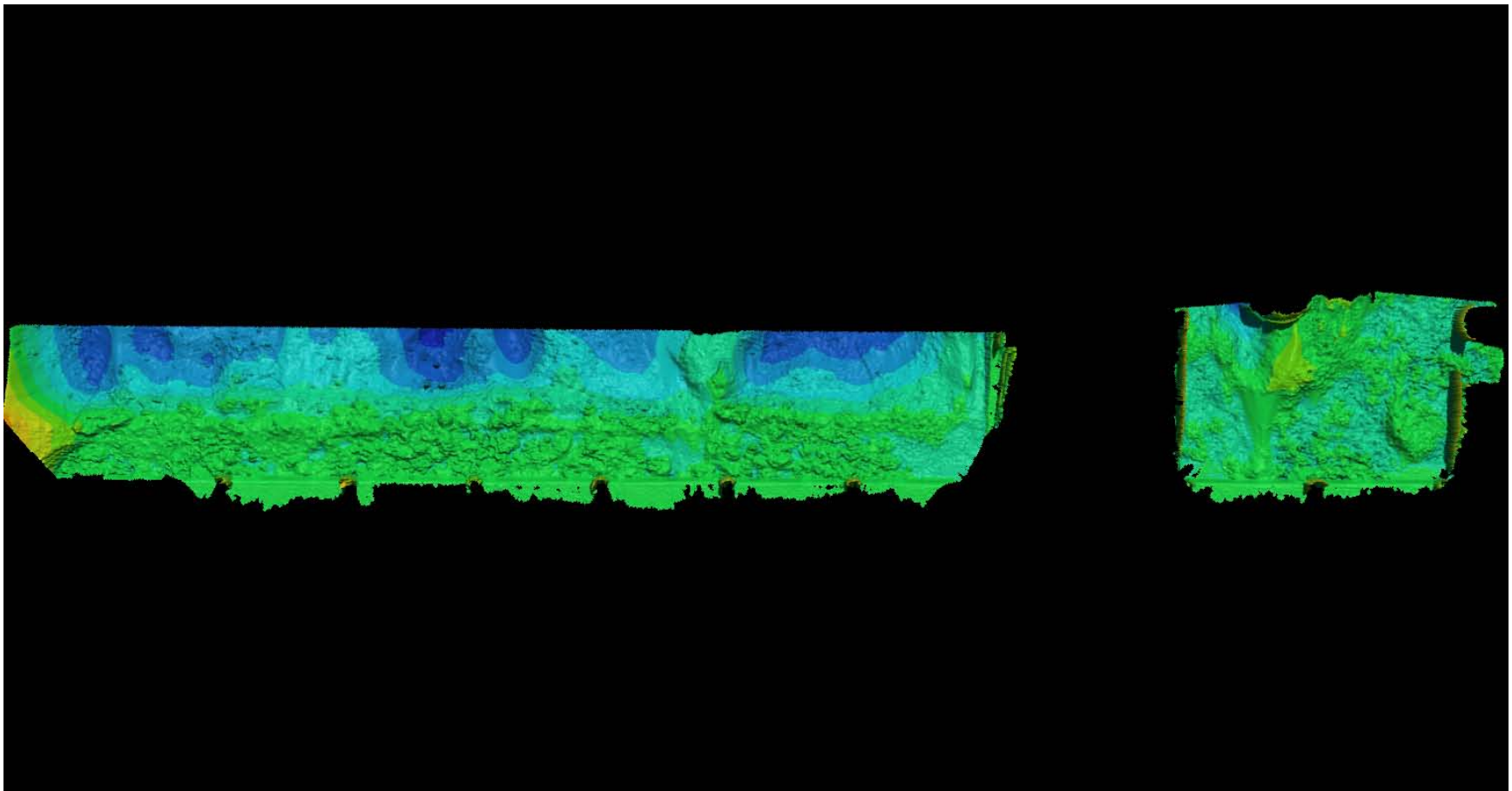
(Flow direction and gate numbering consistent for all surveys)



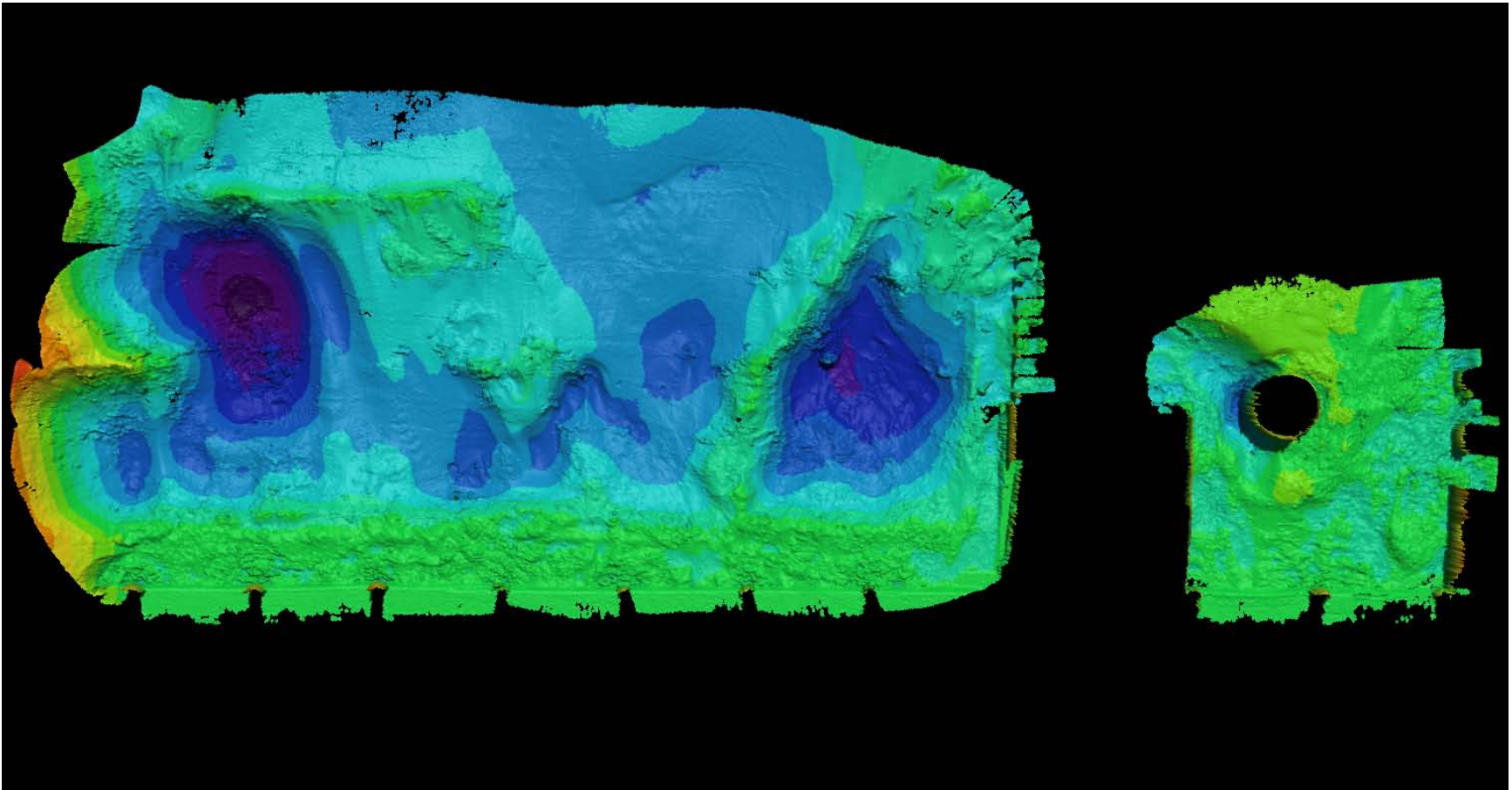
August 25, 2007 Survey



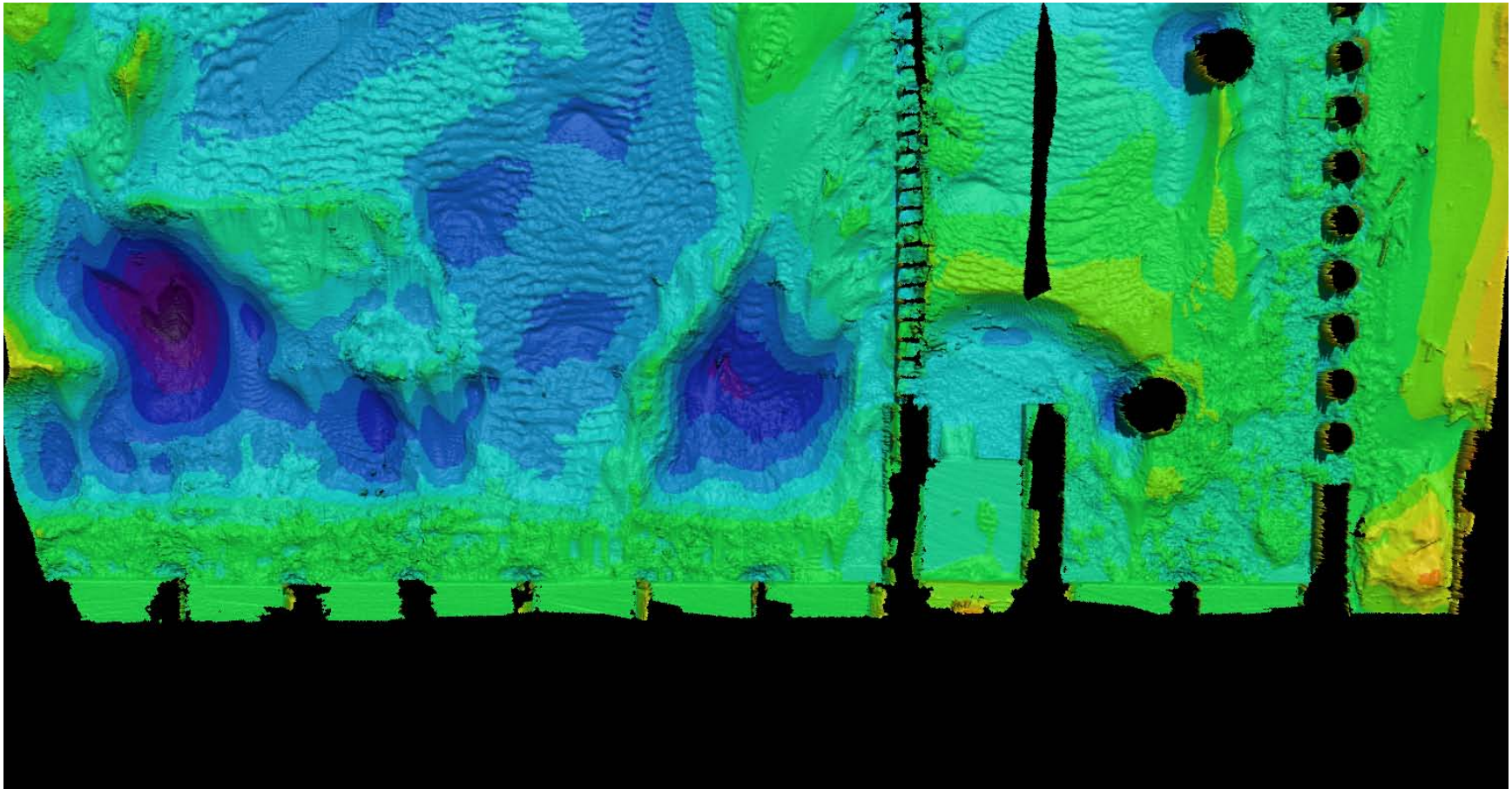
November 1, 2007 Survey



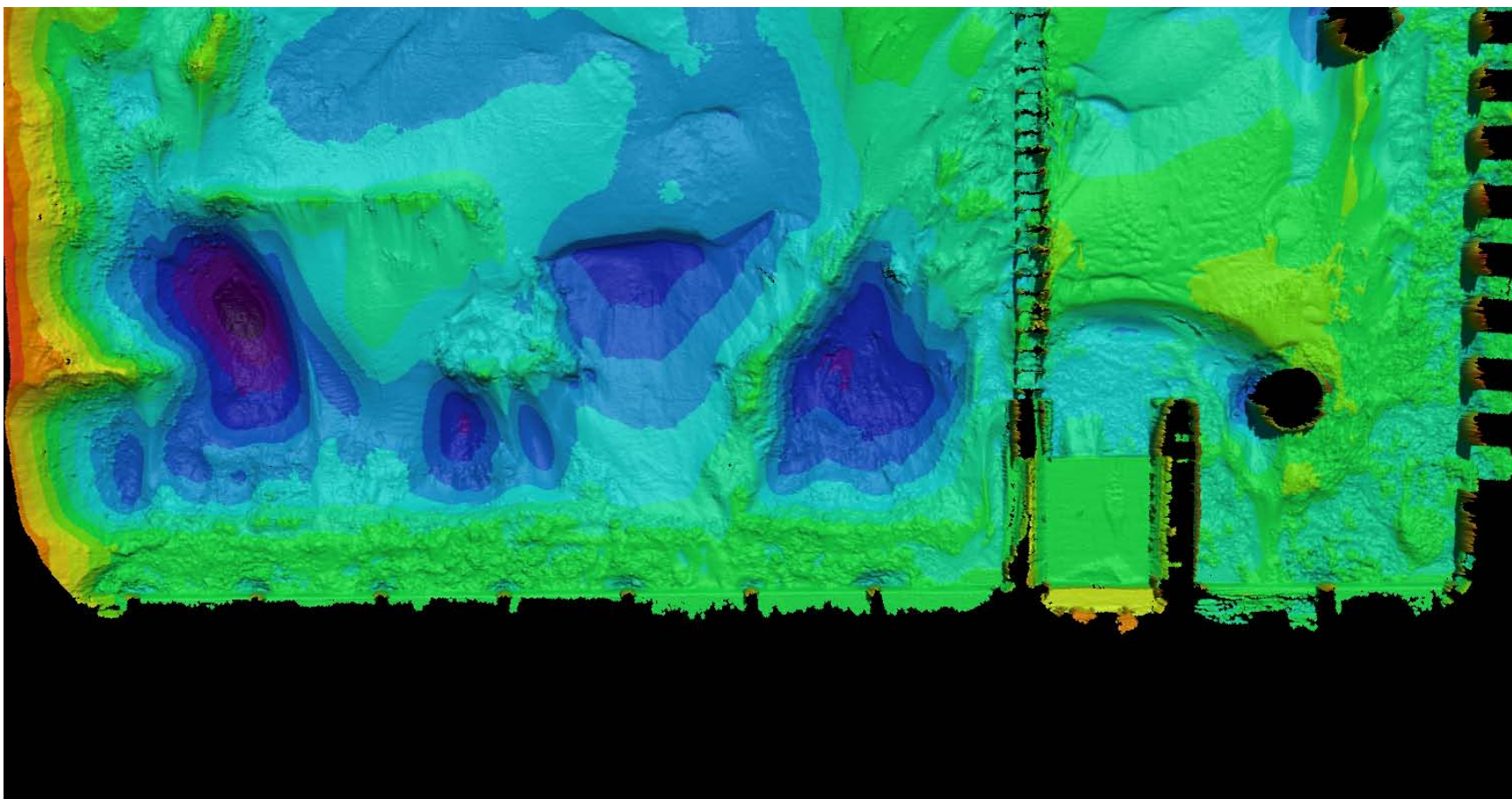
May 11, 2008 Survey



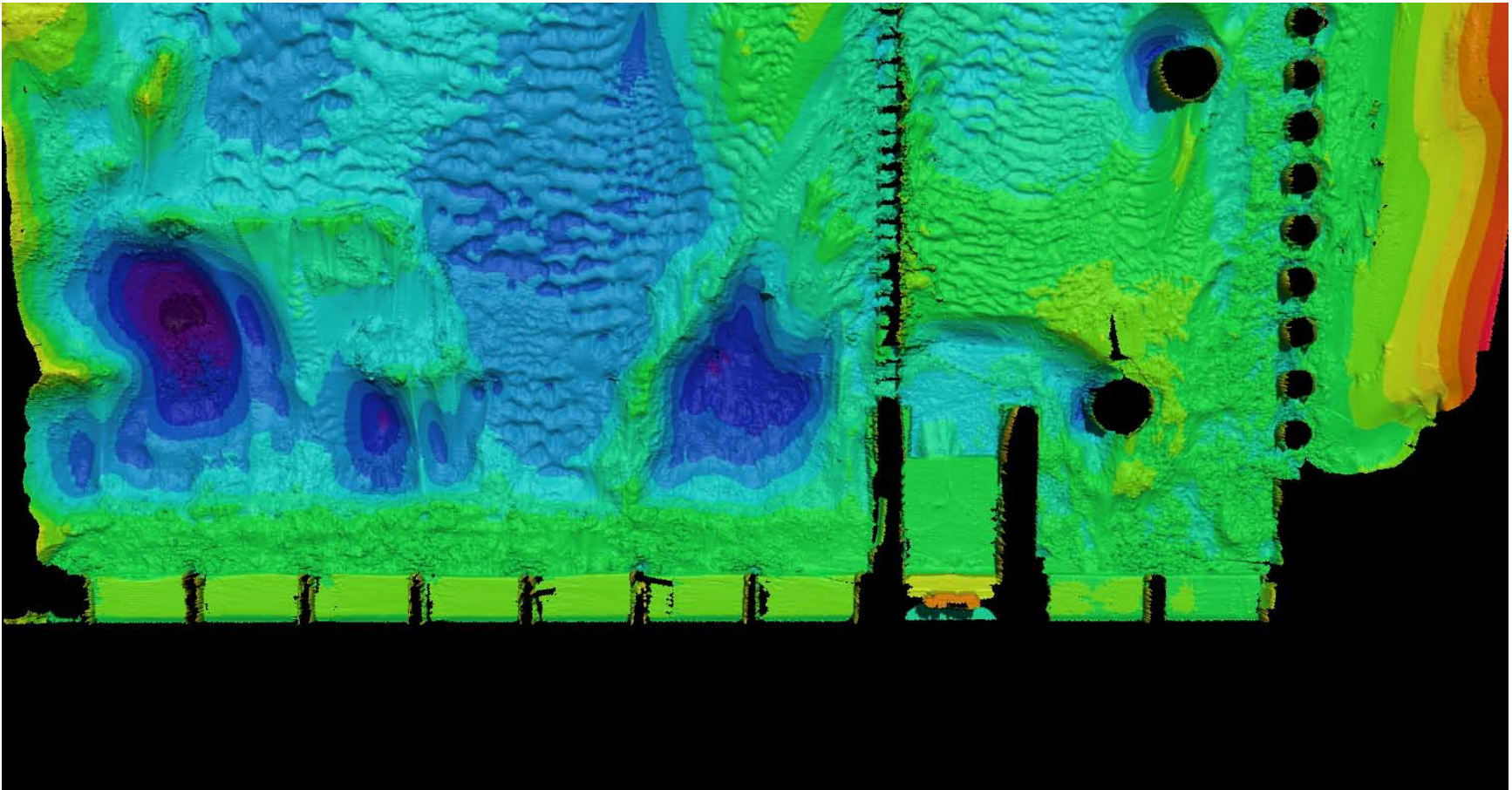
July 8, 2008 Survey



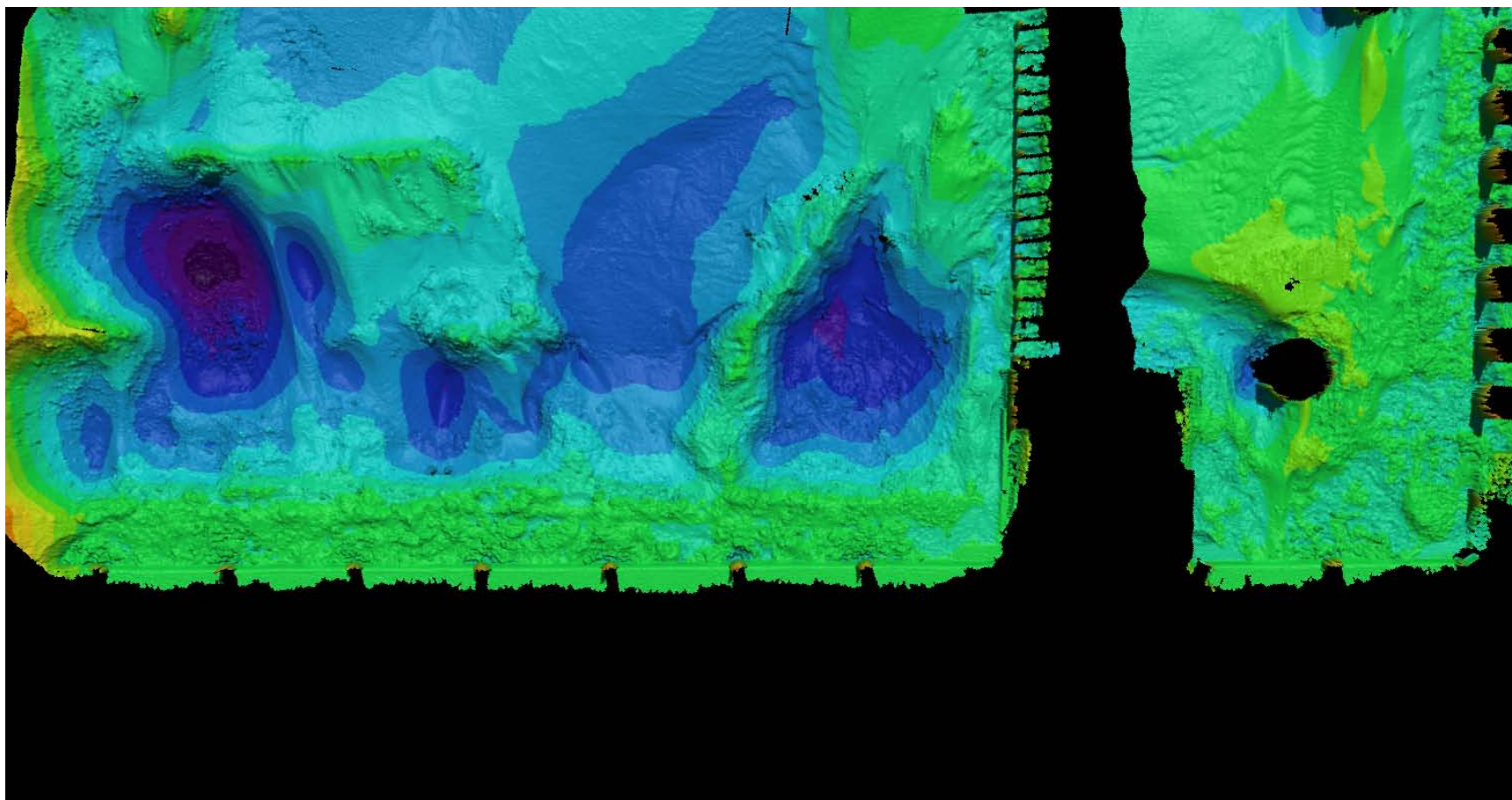
August 28, 2008 Survey



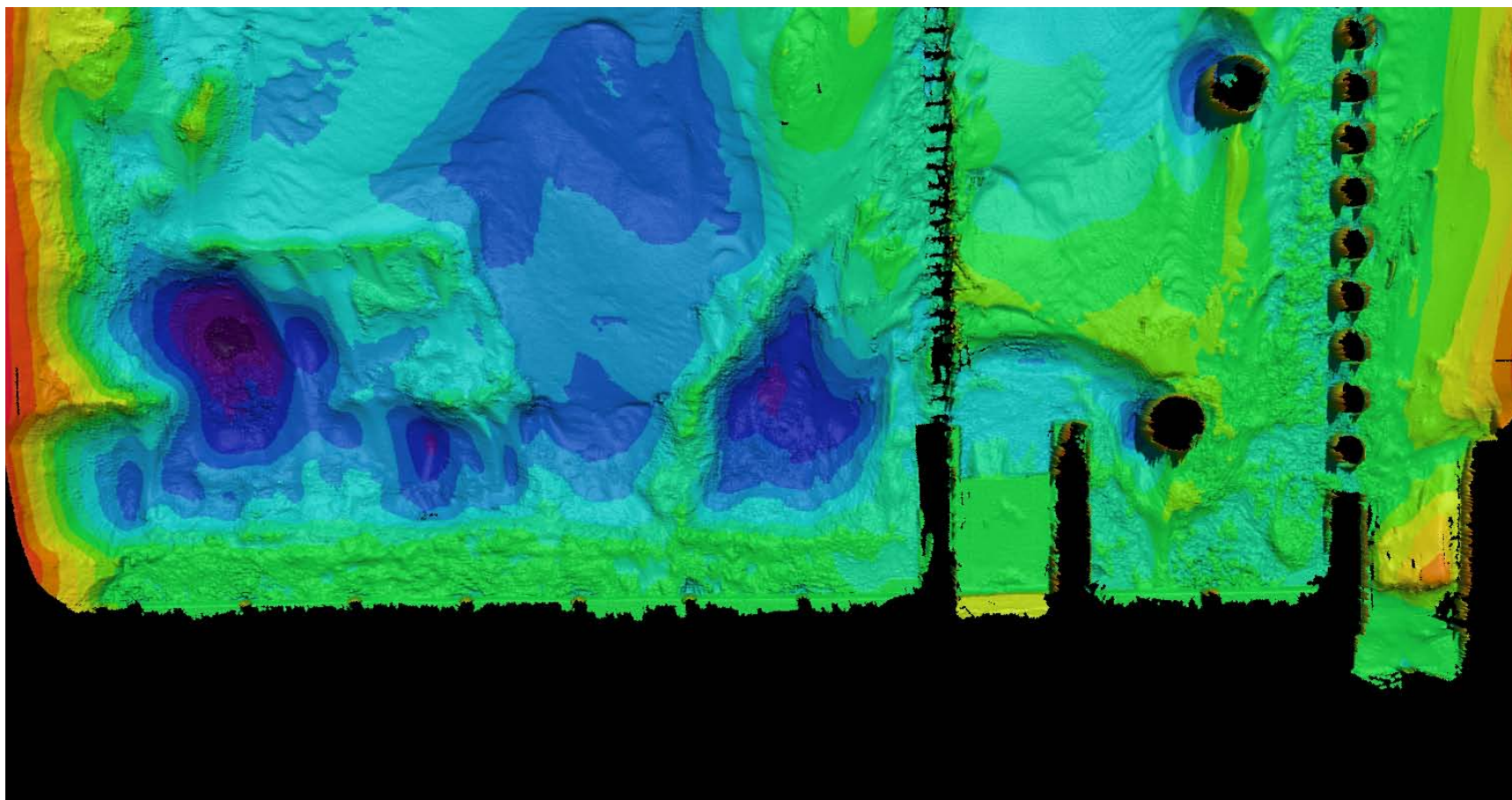
March 18, 2009



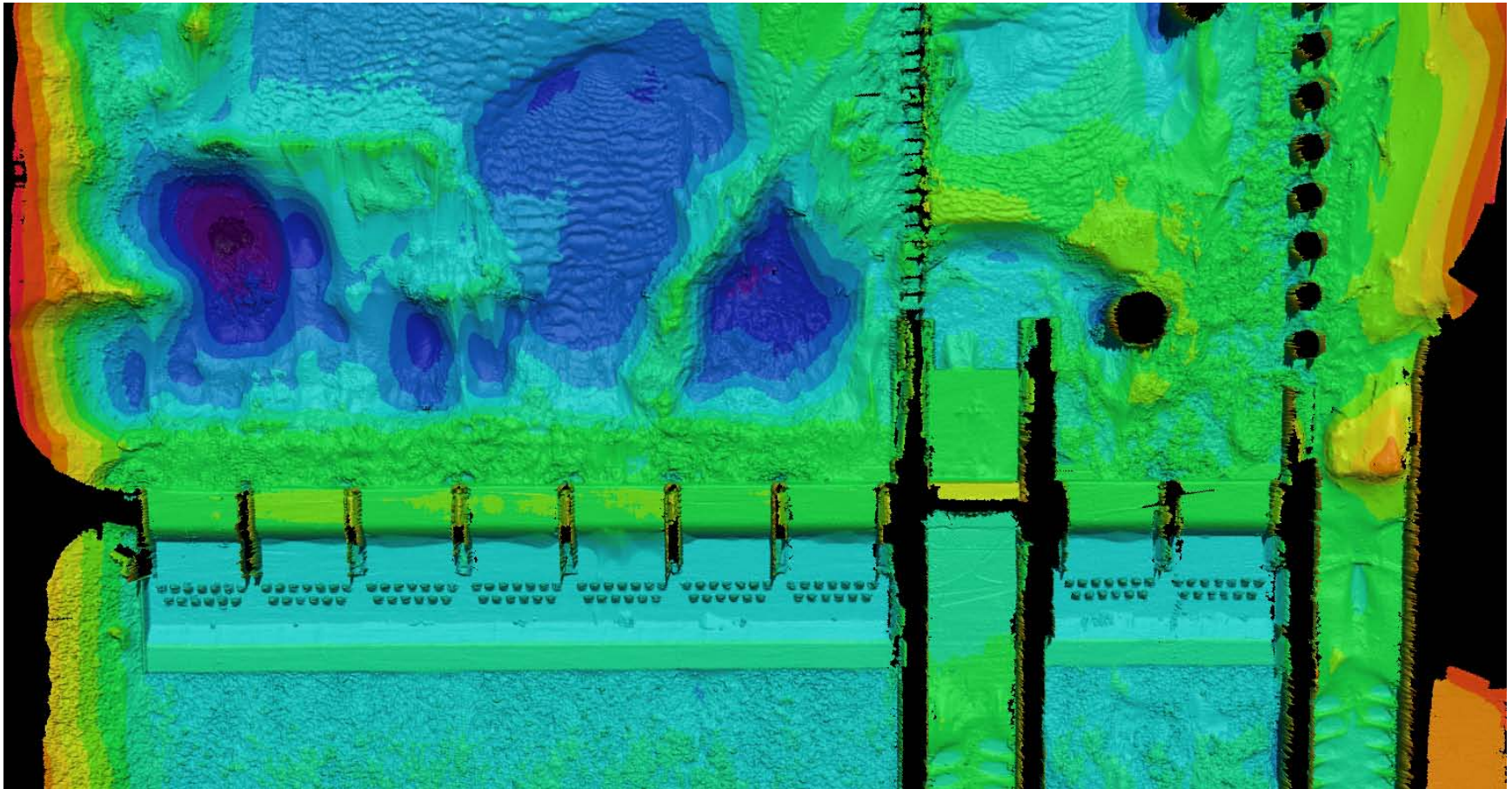
July 21, 2009 Survey



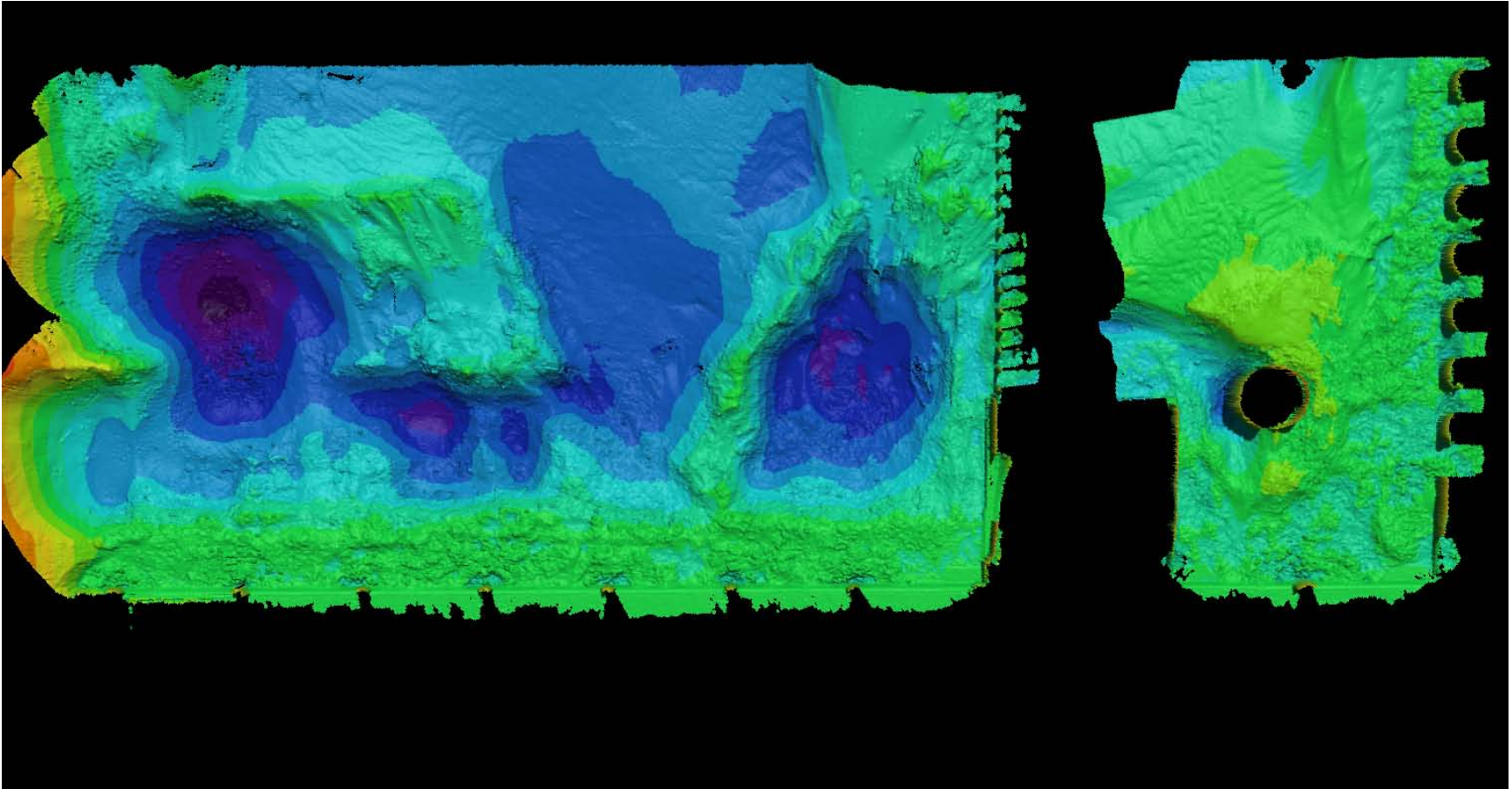
December 17, 2009



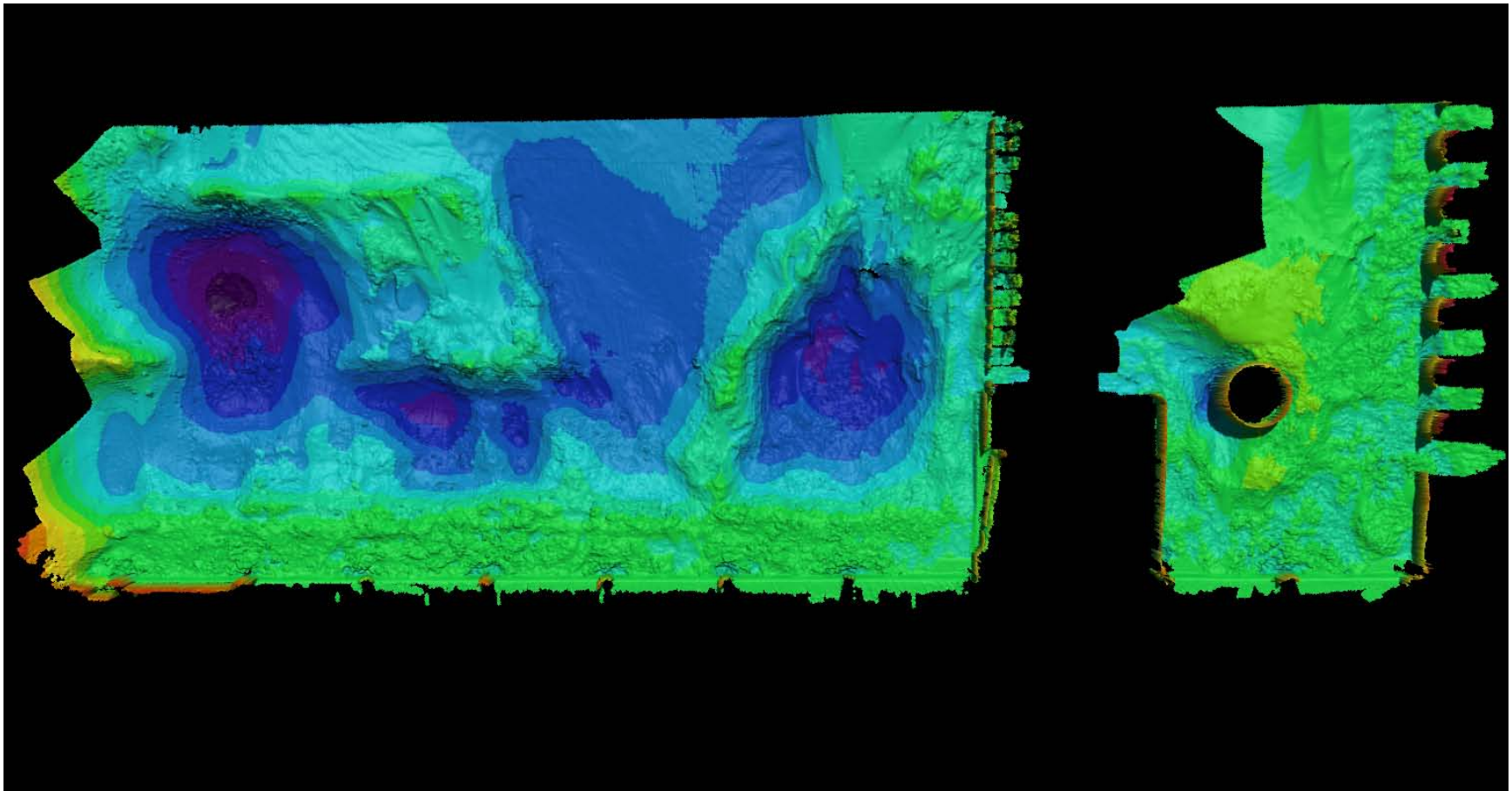
April 28, 2010



October 3, 2010



December 2, 2010



March 2, 2011

